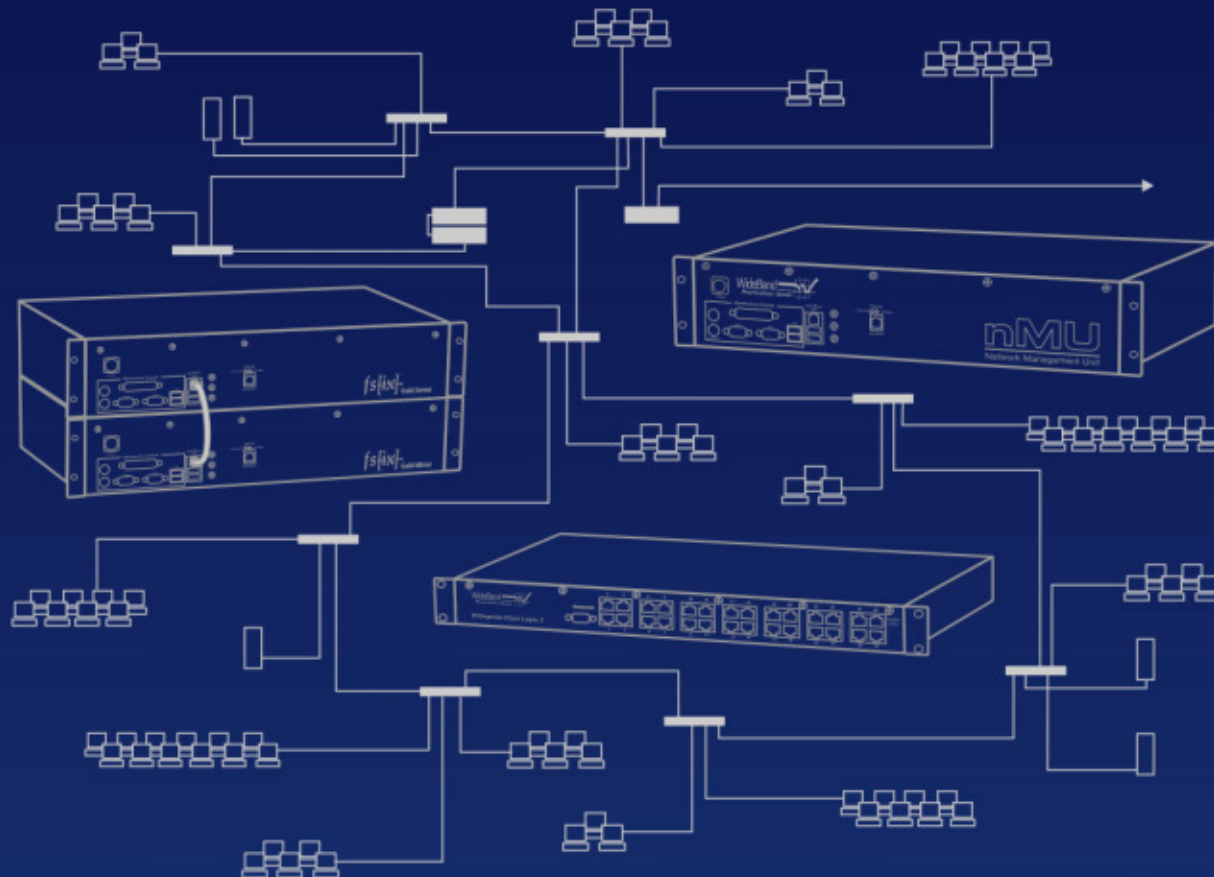


Building Reliable Networks with the nMU, Mirrored Servers, & Redundant Data Paths

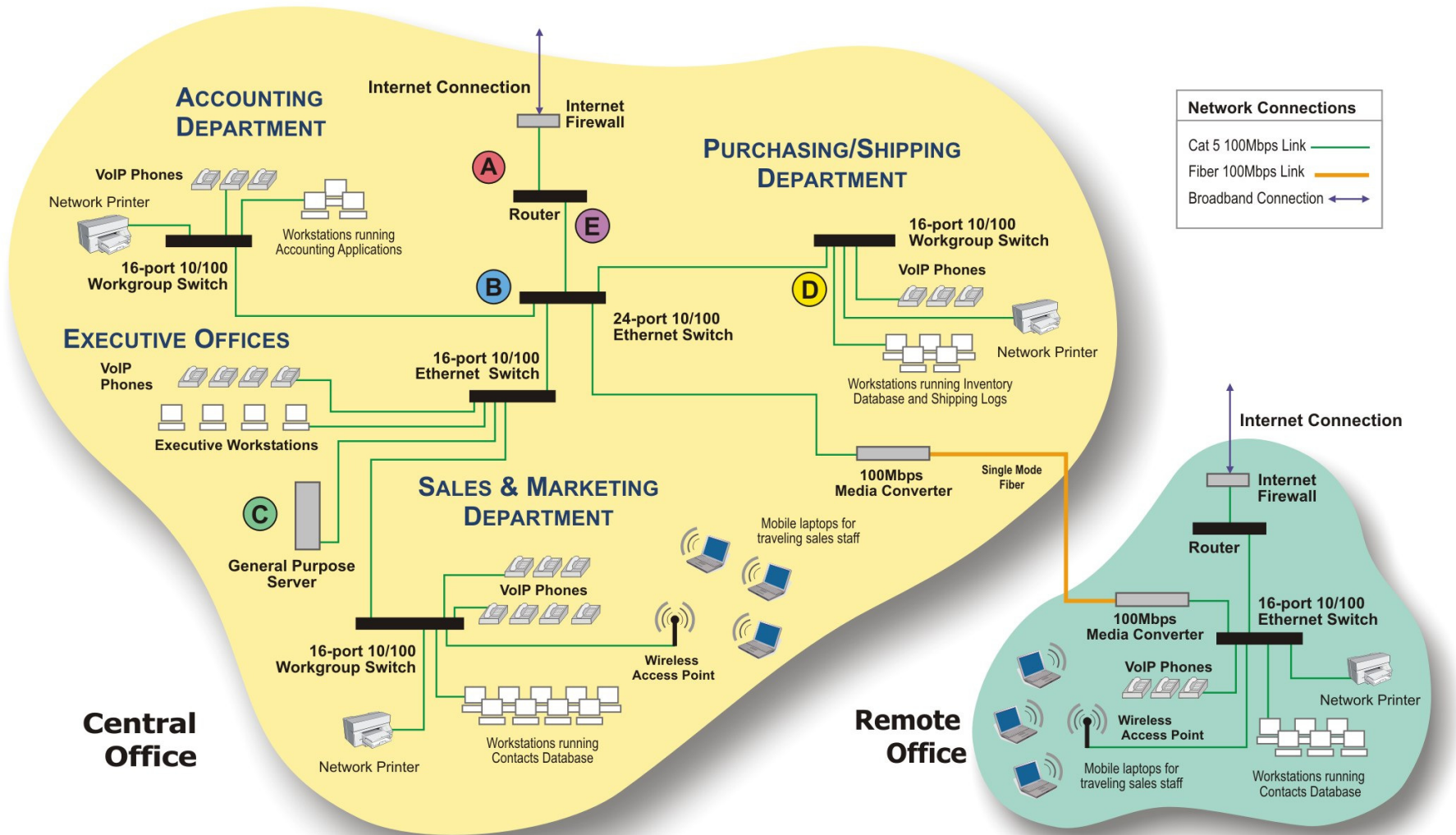


Mission Critical Networks

- Fast
- Reliable
- Secure

These factors are critical to organization's ability to accomplish their mission.

Figure 1 – A Less Than Perfect Network



Deployment of a WideBand “Heart”

- Centralized Management
- Mirrored Network Storage
- Gigabit Switches with Redundant Links
- Off-site Backup of Critical Data
- 24/7 Remote Network Monitoring

nMU (Network Management Unit)

Intelligent hardware management for controlling a WideBand Network.

- Monitor & Manage Active Network Components
- Network Vulnerability Scanning
- Physical Layer Testing
- Gateway to WAN and Internet connections
- “Watchmen” Generate Reports on Network Faults

WideBand Professional Series Gigabit Switches

Hardware-based switching for a WideBand Network.

- Data Processing with an SPU (Switch Processing Unit)
- Interfaces with the nMU to Create a Fault Tolerant Network
- No Need to Rewire – Run Gigabit Over Cat-5 Cable
- 100% Non-Blocking on all Ports
- Available in Layer 2 or 3 configurations

fs[ix] Gold Server

100% redundant, mirrored, network storage solution containing two servers in one – a primary and a mirror.

- Automatic Rollover to Mirrored Server
 - Automatic Reconfiguration of Repaired Servers
 - nPX – Powerful Web Page Development Tool
 - Interfaces with the Off-site Data Backup Service
- *PC Magazine – 4 Star Editor Rating**

S-Key – Secure USB Key

Lock down server administration & secure sensitive data.

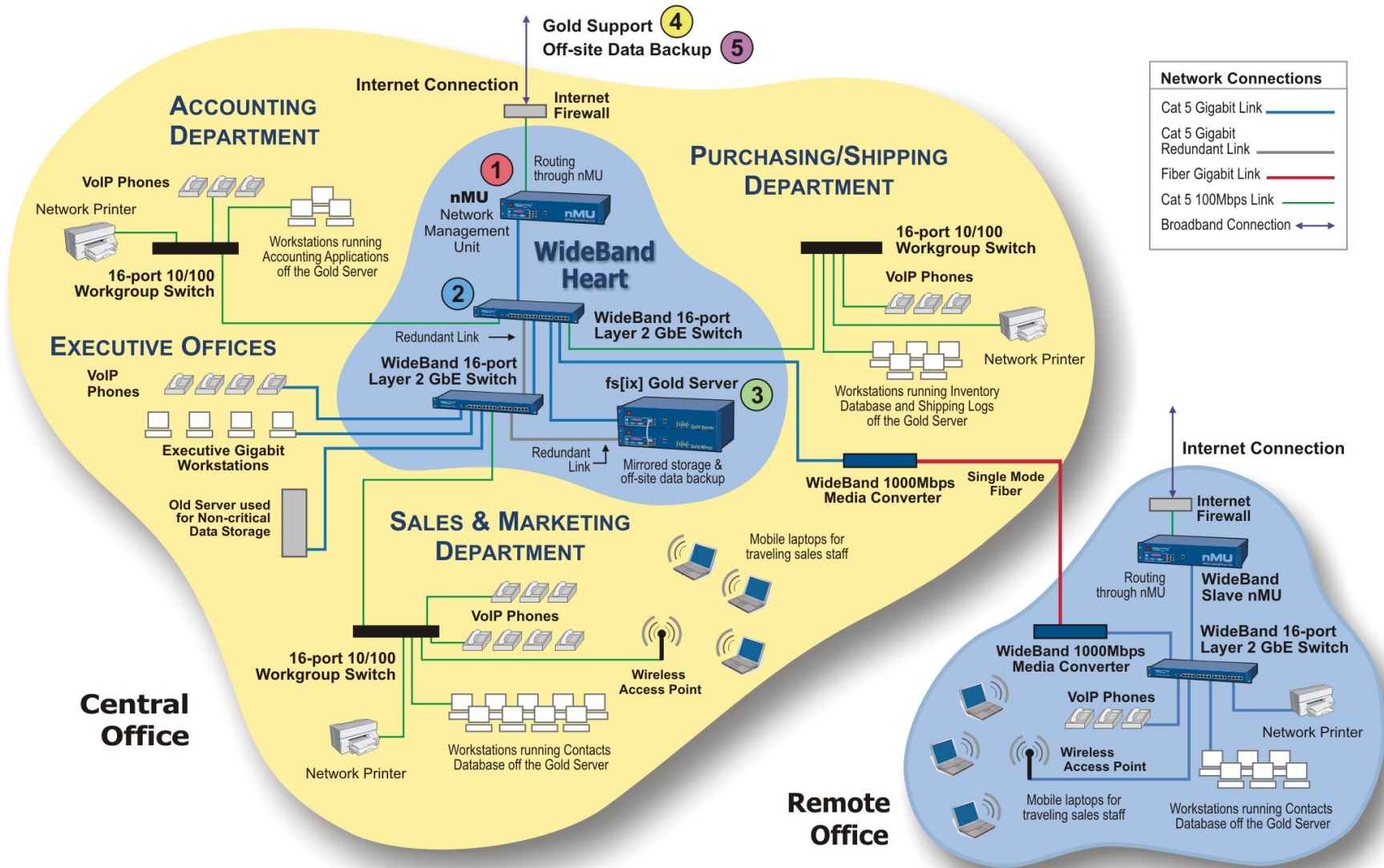
- Powerful 256-bit AES Encryption
- Provides Multi-Factor Authentication
- Stores Personal ID Data in the Key – No Third Party Verification Needed
- Lock down personal / confidential information on your computer

Gold Support & Off-site Backup

Proactive support that helps keep your network in operation 24/7. Off-site data protection.

- Remote Network Monitoring and Fault Detection in Switches, Physical Layer, and Servers
- Automatic Replacement of Faulty Equipment
- Remote Network Management Service
- Critical Data Backed up to an Off-site Location

Figure 2 – Installing WideBand in the Heart of the Network



Example Scenario #1

Problem: A hard drive fails on your primary server.

Solution: The fs[ix] Gold Server automatically detects the failure and rolls over to the mirrored server while sending a failure alert via email.

Result: No loss of data is experienced and network users are unaware that a major failure has occurred.

Example Scenario #2

Problem: A cable connecting two core switches is accidentally disconnected.

Solution: The WideBand nMU detects the loss of connectivity and automatically re-routes data through the redundant link between the two WideBand switches.

Result: The network remains operational and no downtime is experienced.

Example Scenario #3

Problem: A network cable is improperly terminated causing errors and retransmissions on the network.

Solution: A Watchman report is sent from the WideBand nMU reporting the errors. The WideBand customer service team notifies the customer of the exact port on the WideBand Switch that the bad cable is connected to.

Result: Network performance is greatly improved by eliminating errors and retransmissions.



On-site Network Health Analysis

Five tests and screenings in one hour:

- Network Performance & Physical Layer Screening
- Security Vulnerability Scan & Analysis
- Critical Data Protection Analysis
- Fault Tolerance & Redundancy Screening
- Analysis of Network Management & Support

Building Reliable Networks with the nMU, Mirrored Servers, & Redundant Data Paths

