

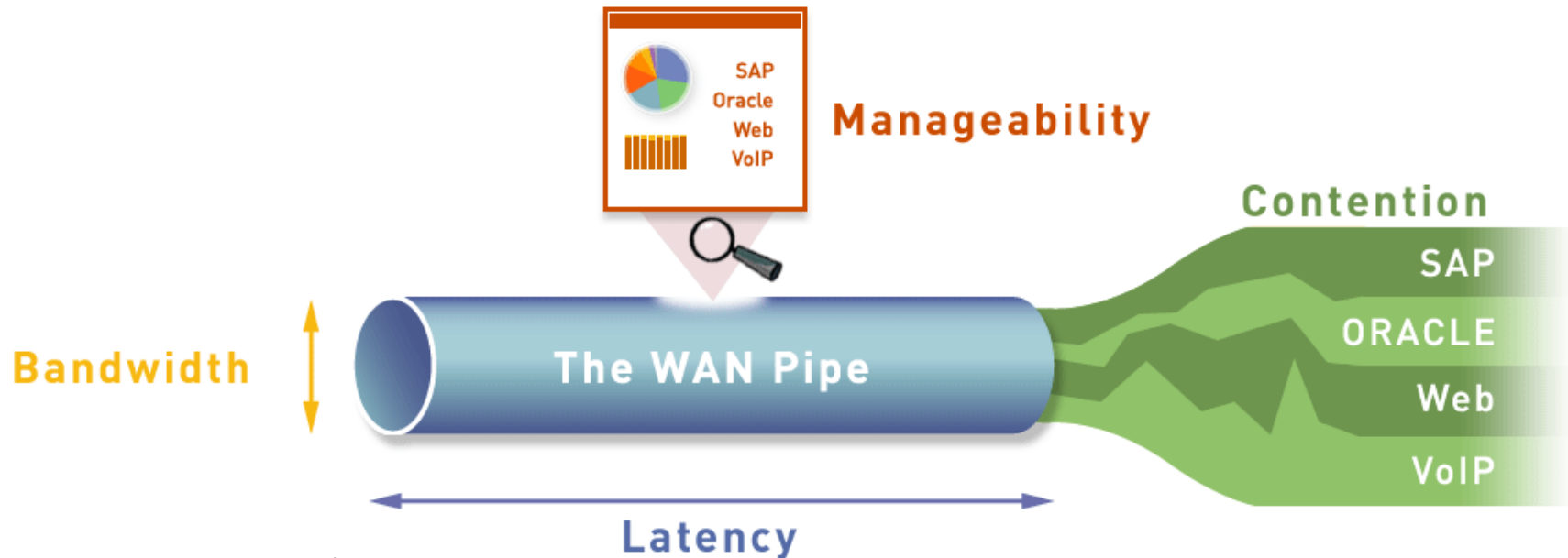


Optimizing the Performance of Enterprise Applications

Tim Richards
Senior Product Manager
Juniper Networks

INTEROP[®]
THE LEADING BUSINESS TECHNOLOGY EVENT

WAN Challenges



Impact on applications:

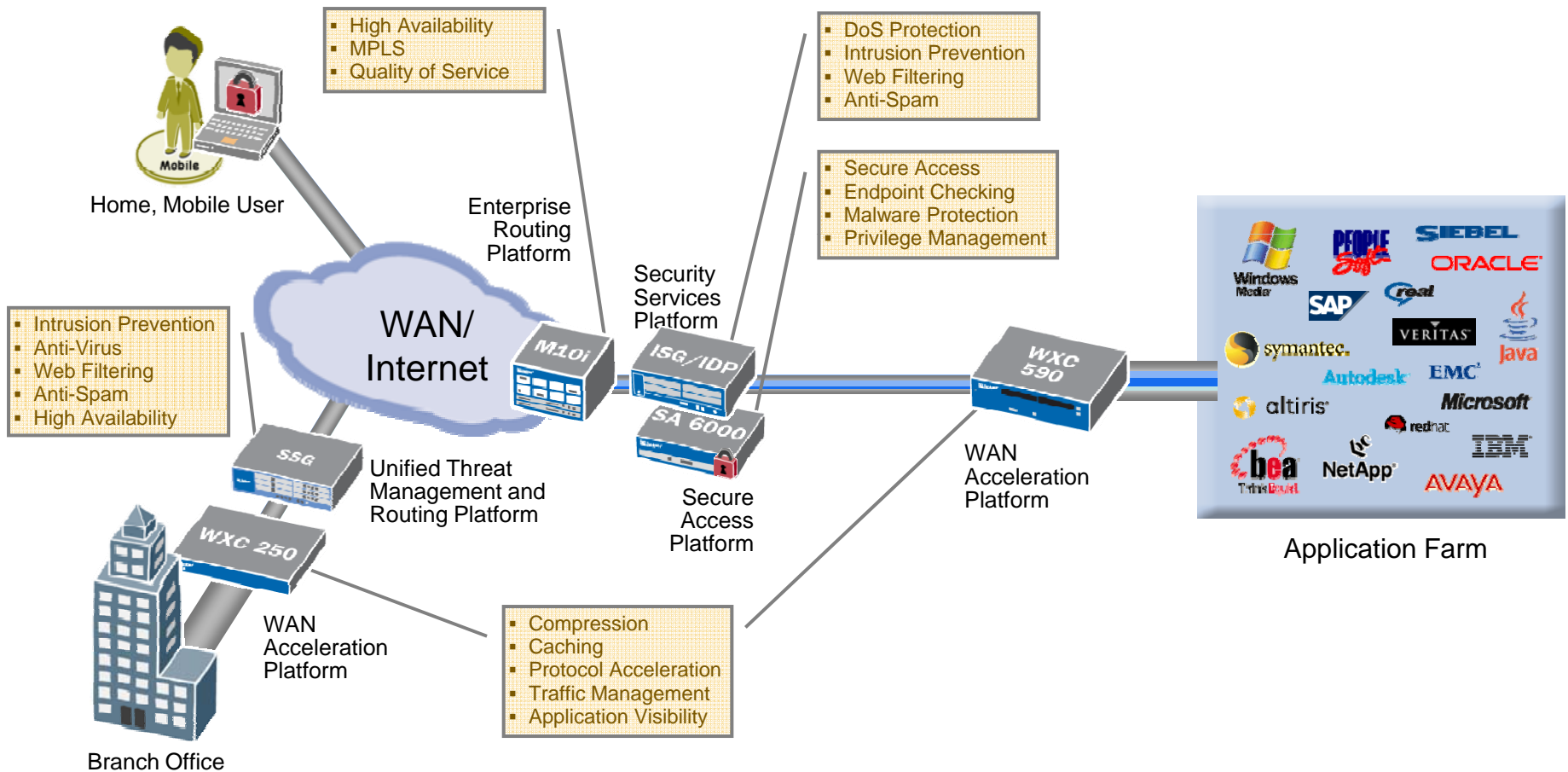
More rich content

Protocol chattiness

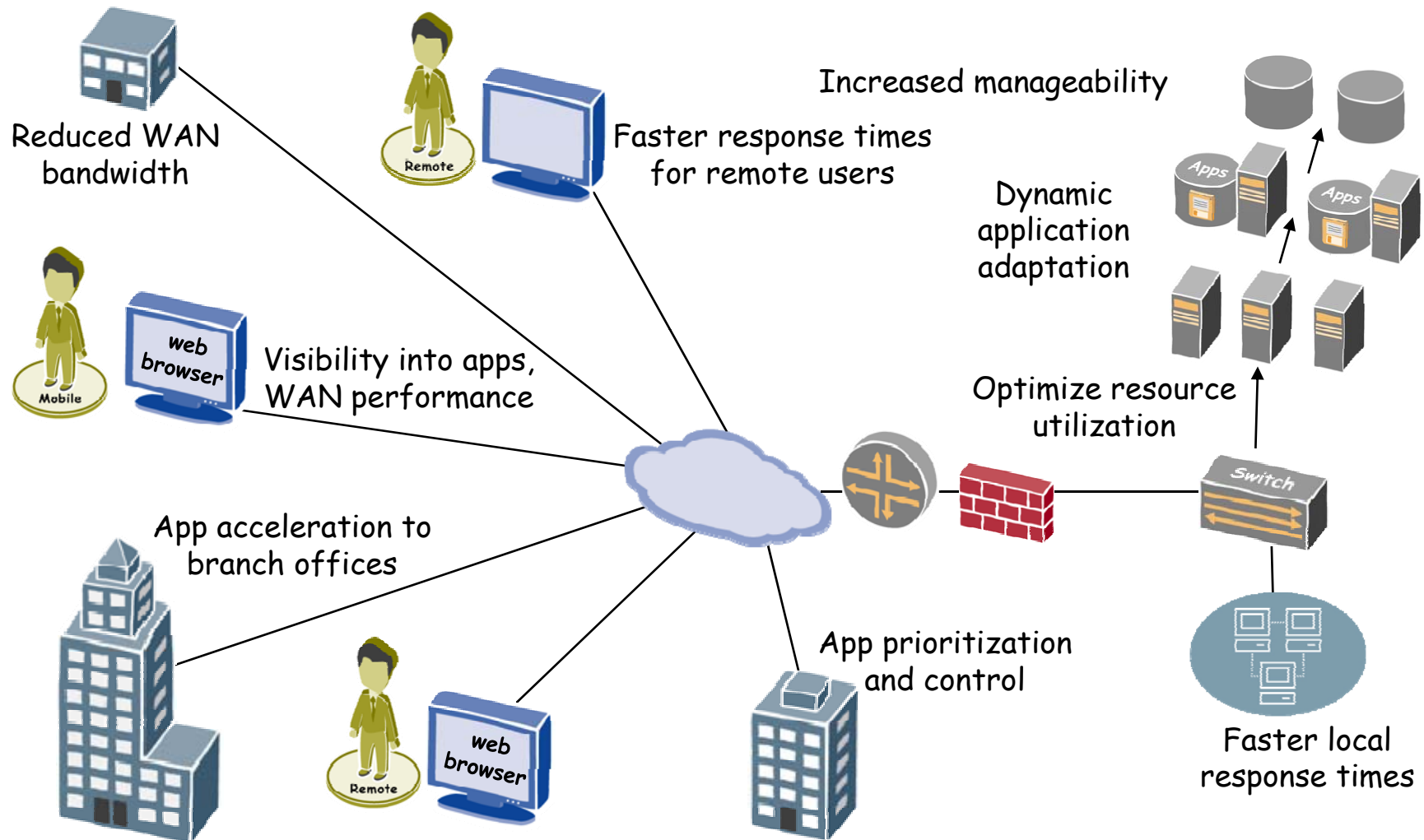
Lower-priority apps
slow down critical ones

Inability to understand application and WAN performance

Secure and Assured End-to-End Delivery of Applications Across the Enterprise

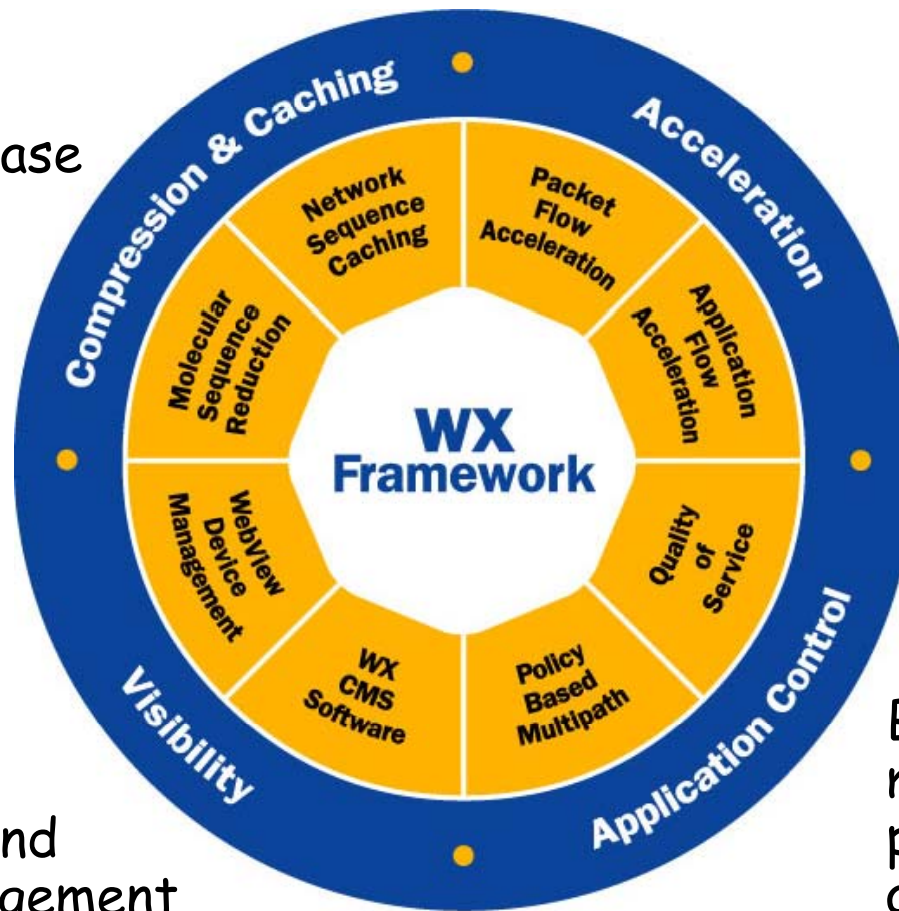


What's Needed for Application Acceleration



Juniper Networks WX Framework – Integrated Architecture

4x to 100x
capacity increase
with memory
and hard-disk
techniques

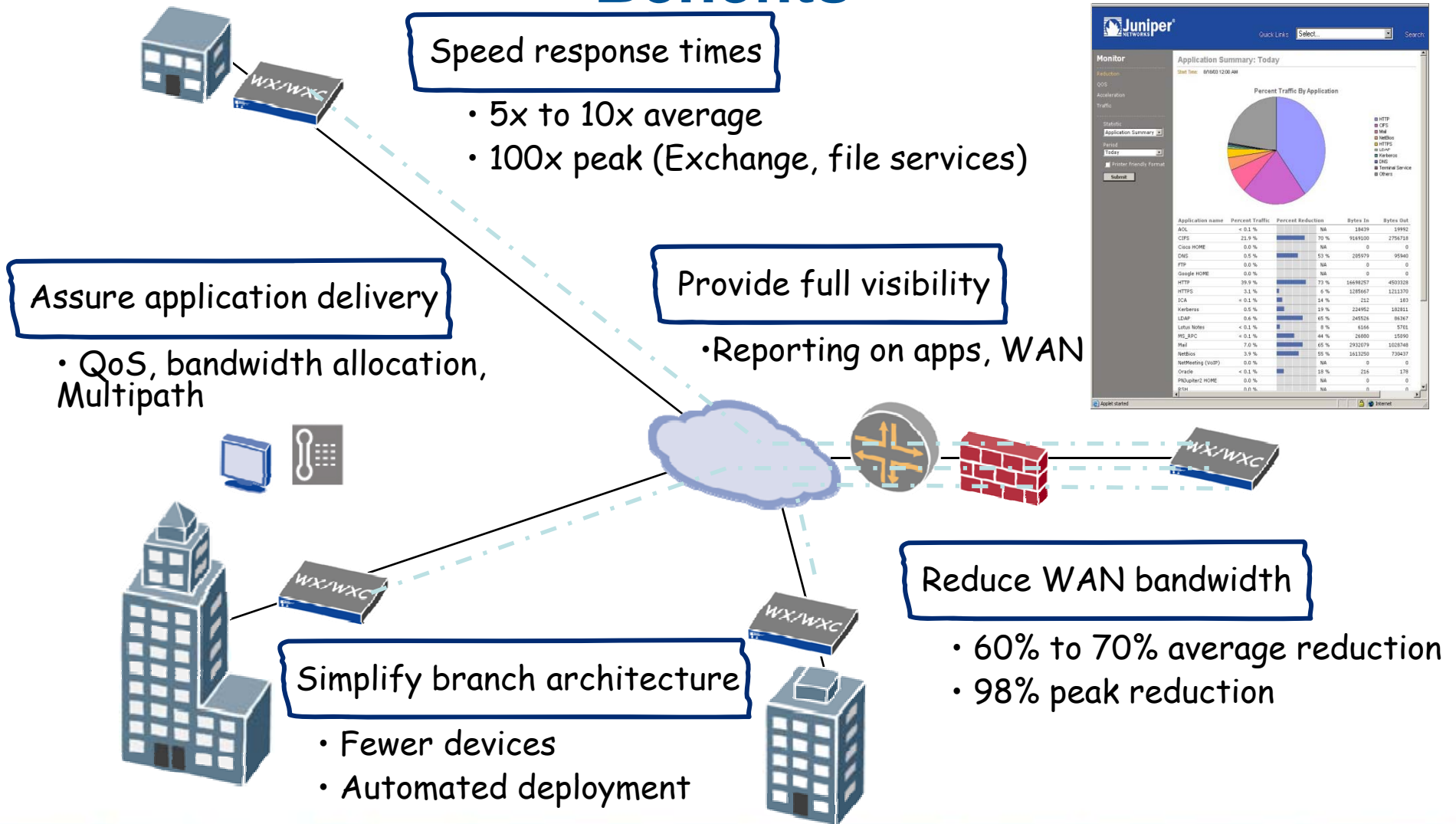


Faster response
time with broad
TCP and
app-specific
acceleration

Reporting,
performance
monitoring, and
remote management

Bandwidth
management and
path optimization
across multiple links

WAN Acceleration – Juniper Networks WX Benefits



Japan Tobacco International — Accelerating SAP Performance



-
- | | |
|-----------------|---|
| Profile | <ul style="list-style-type: none">▪ Tobacco product manufacturer▪ 12,000 employees in offices in 40 countries |
| Business need | <ul style="list-style-type: none">▪ Centralized SAP installation - largest single-site deployment |
| Problem | <ul style="list-style-type: none">▪ WAN congested with Citrix, SQL, web traffic |
| Solution | <ul style="list-style-type: none">▪ Deployed 35 WX devices globally |
| Juniper results | <ul style="list-style-type: none">▪ Peak reduction 90% (avg. 60%) made room for SAP▪ Saved \$\$\$ and improved data reliability▪ Four-month ROI |
-

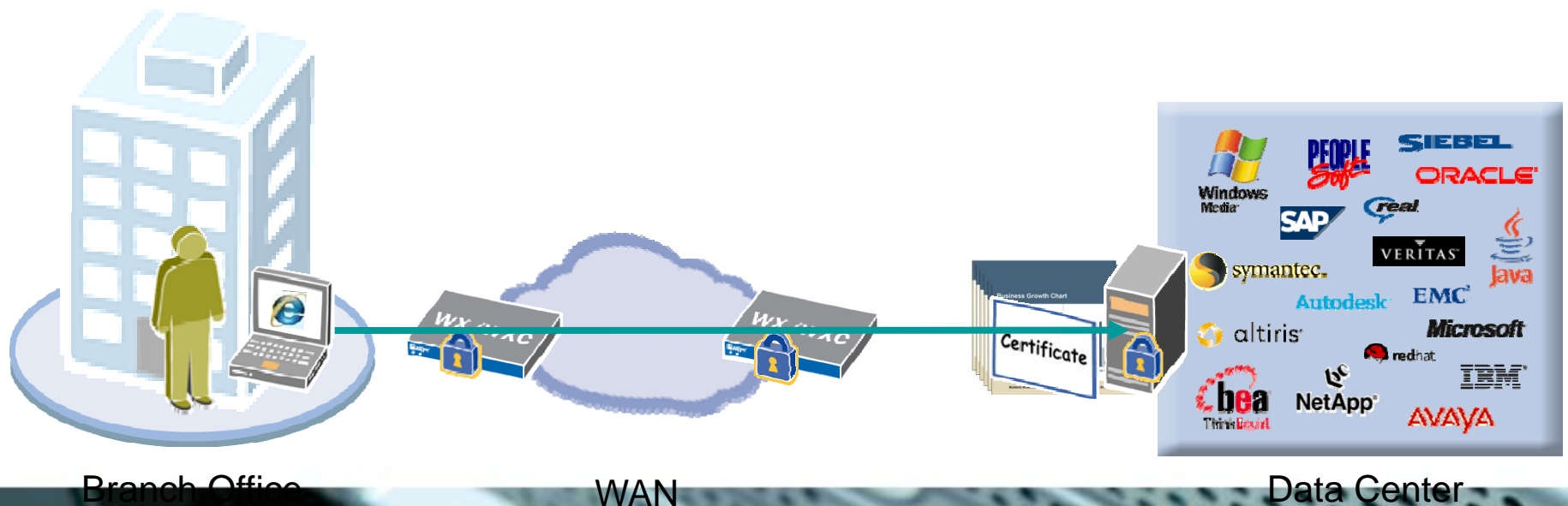
BOC Edwards — SAP, VoIP, Exchange



-
- | | |
|-----------------|---|
| Profile | <ul style="list-style-type: none">▪ Leading chemical manufacturer with 5,000 employees at >50 sites |
| Business need | <ul style="list-style-type: none">▪ Simplify admin/backup of Exchange▪ Improve SAP productivity |
| Problem | <ul style="list-style-type: none">▪ WAN overrun▪ No class of service |
| Solution | <ul style="list-style-type: none">▪ Deployed 35 WX devices globally |
| Juniper results | <ul style="list-style-type: none">▪ Increased capacity and prioritized SAP / Voice▪ Accelerated Exchange & enabled server centralization▪ Saved \$\$\$ & achieved six-month ROI |
-

Secure Applications: The Juniper Networks WX Solution

- AppFlow™ for SSL accelerates SSL-encrypted applications across the WAN
- SSL certificates/private keys only required for data center WX device
- Zero touch for client or server, maintains end-to-end security

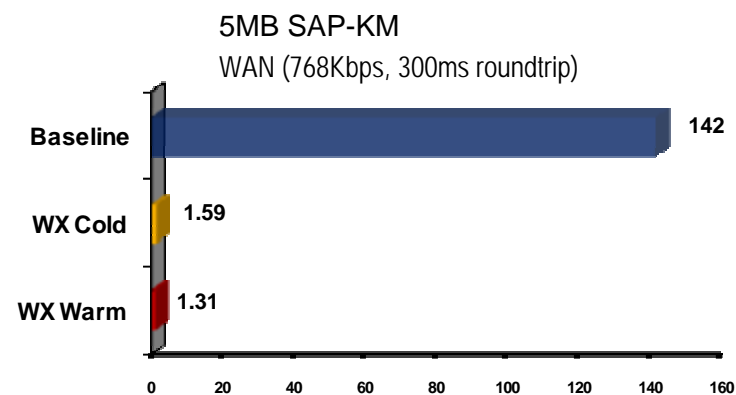
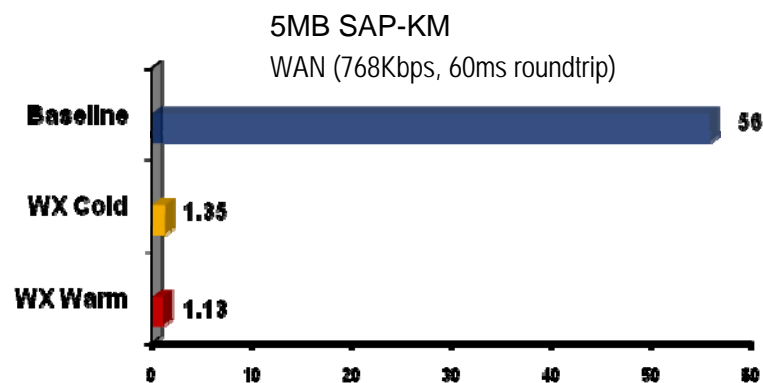


INTEROP



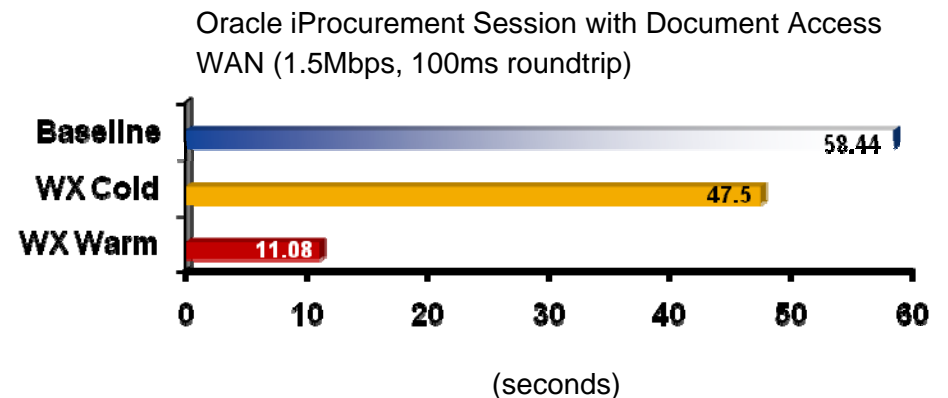
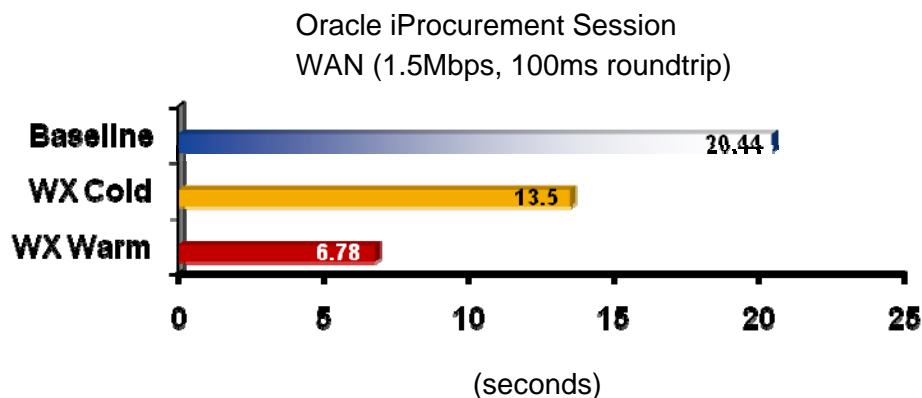
Secure Applications: SAP Results

- Transaction: 5MB SAP-KM document
- WAN (Frac T1, US domestic), (Frac T1, US – International)
- >97% improvement in response time



Secure Applications: Oracle Results

- Oracle iProcurement session with and without document access
- WAN (T1, coast to coast US)
- 67 – 81% improvement in response time





Thankyou

Tim Richards
Senior Product Manager
Juniper Networks

INTEROP[®]
THE LEADING BUSINESS TECHNOLOGY EVENT