

Enterprise Data Protection



Security Zones: Flexible
Segmentation + Built In Security

David M Lynch

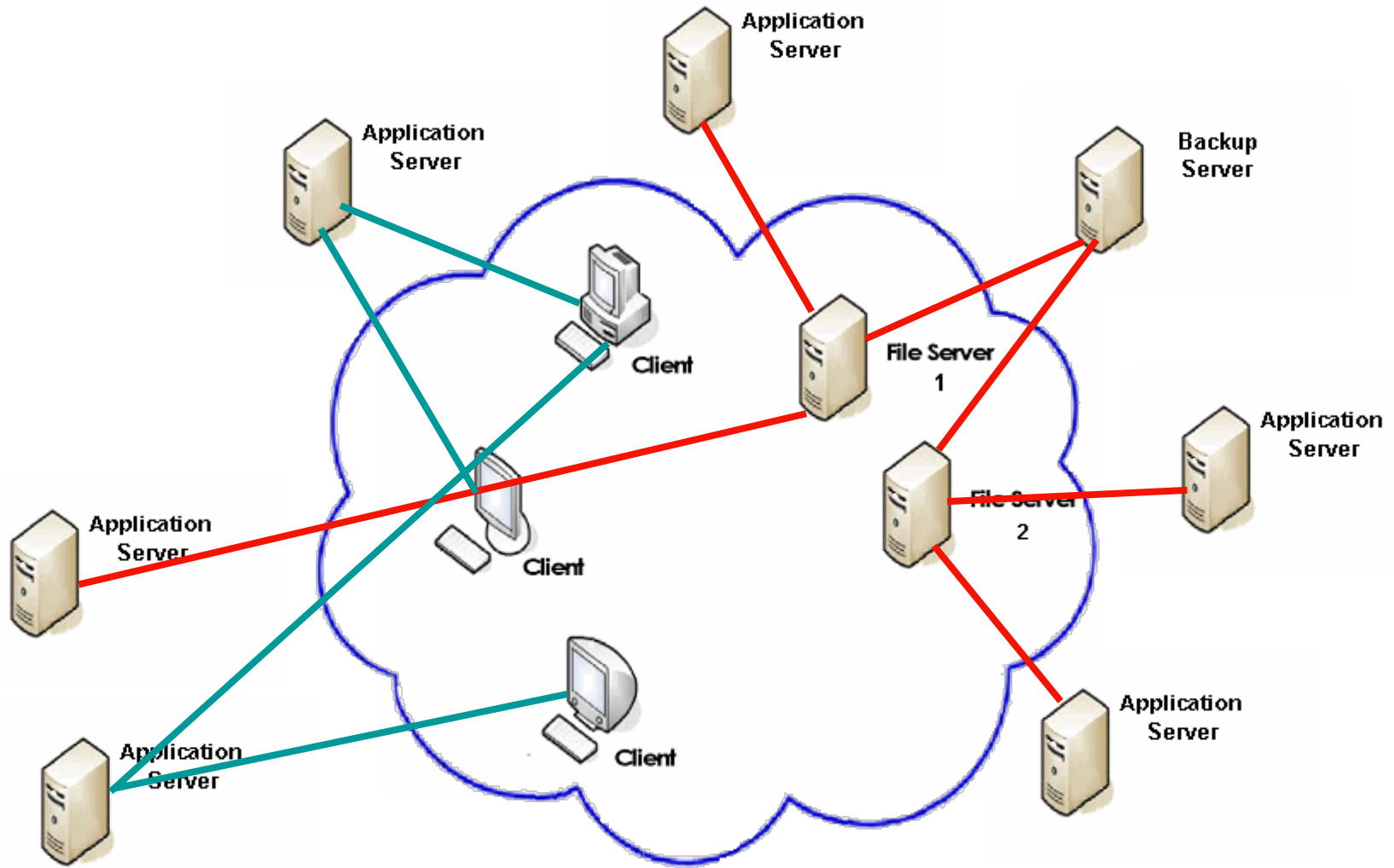
VP Marketing Apani Networks

dlynch@apani.com

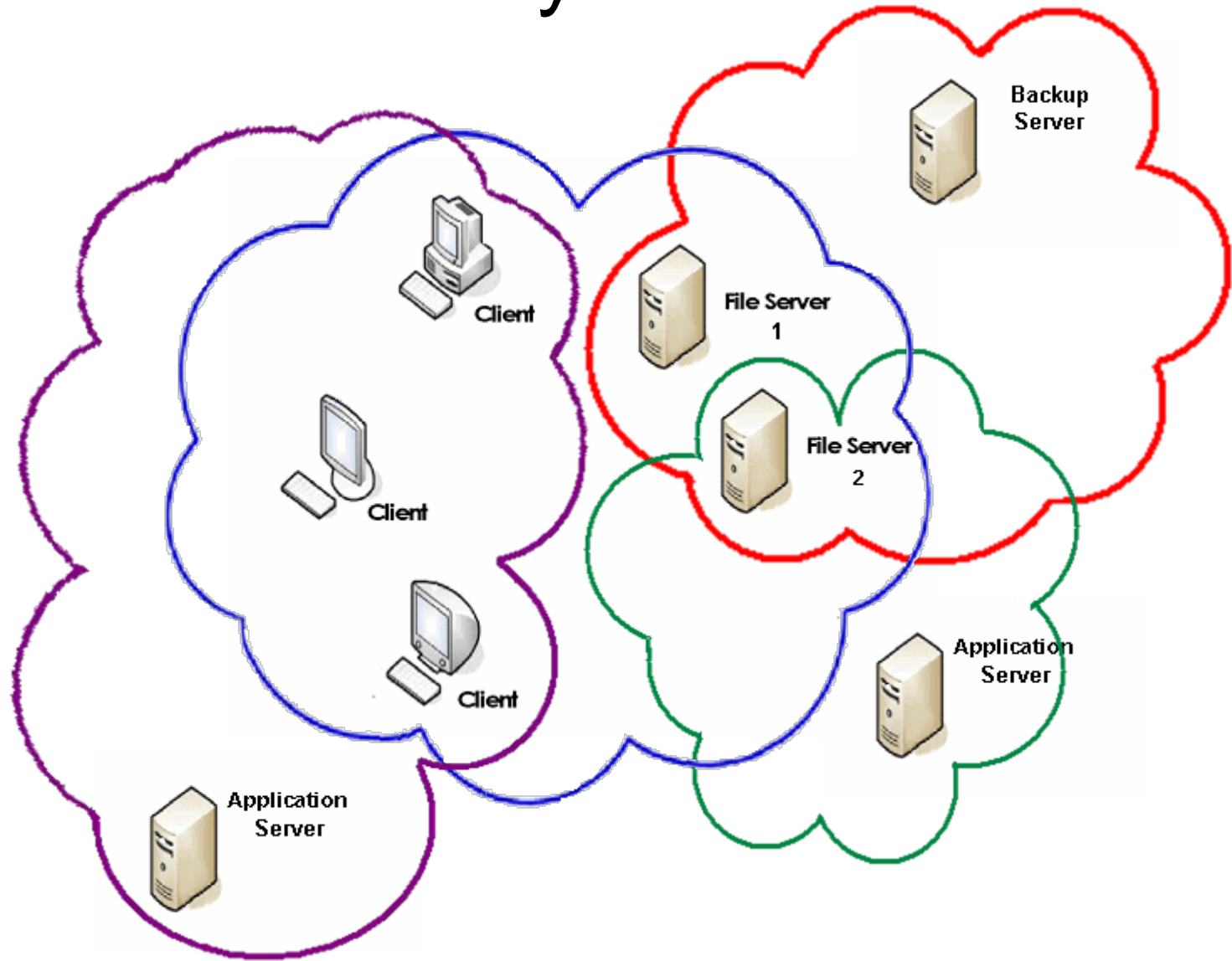
De-perimeterization

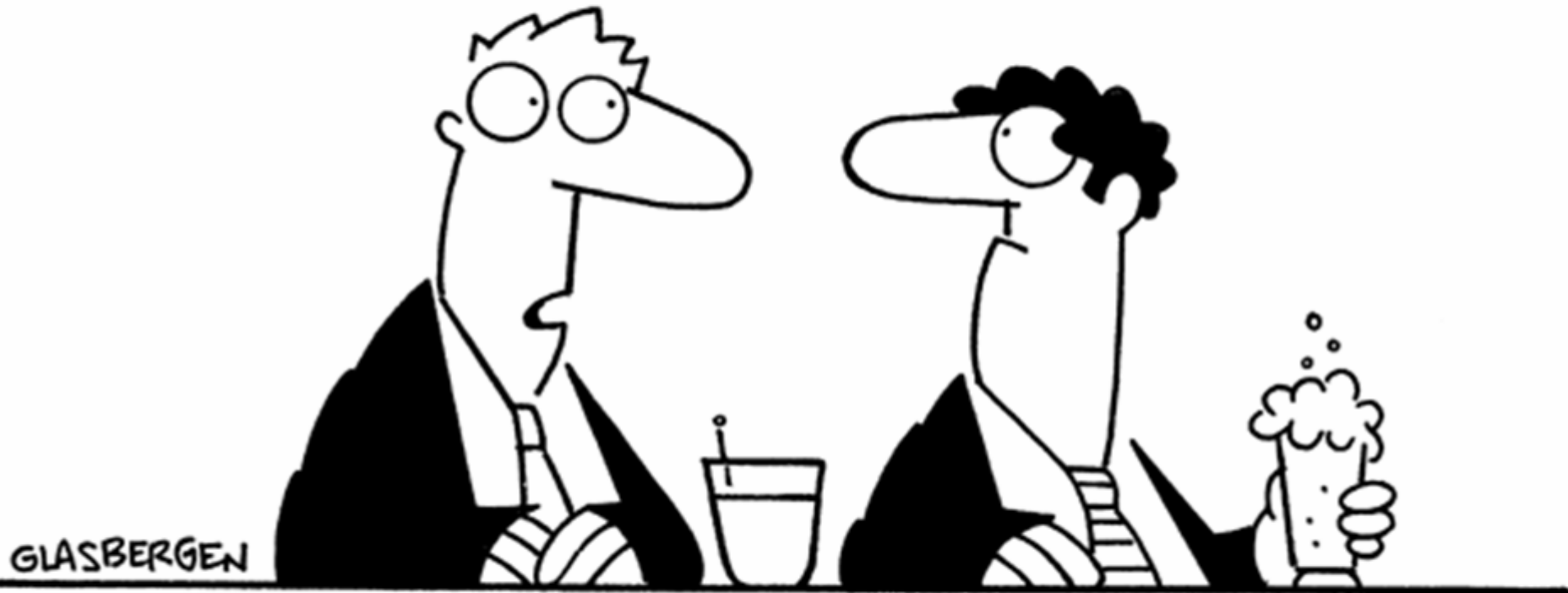


Traditional Segmentation



Security Zones





“While I was thinking outside of the box, someone changed the password and now I can’t get back in!”

Case Study

- Multi-national financial services organization
 - Centrally controlled, enterprise wide encryption of confidential data in motion including user names and passwords without modifying applications.
 - Segmentation as a defense against de-perimeterization
 - Must be easy to manage and operate.
 - Must support a phased deployment
 - Large scale environment
 - Large number of applications
 - Wide variety of operating systems
 - Large numbers of systems



The System Deployed

- Agent based
 - Self provisioning (certificates and policies)
 - Provides point to point control and connectivity
- Enterprise scale
 - 100K+ agents
 - Supports all operating systems
- Configurable security for all zones
- Managed dynamically from a central console
- Encryption transparent to users and applications
- Automatic enforcement of all security policies and out of bounds reporting provide a strong audit trail

Their Deployment

- Staged deployment of Security Zones based on applications:
 1. FTP
 2. Telnet for remote access privileges
 3. Application “A”
- Deployment is continuing as they work through their prioritized application list....
- Security zones incorporate:
 - Authentication
 - Authorization
 - Access control
 - Data-in-motion Encryption
 - Audit trail

Security Zone deployment

Application based Security Zones with built in security

- Client only initiates session
- Peer-to-Peer, bi-directional within zone only
- Peer-to-Peer, allows communication outside zone.

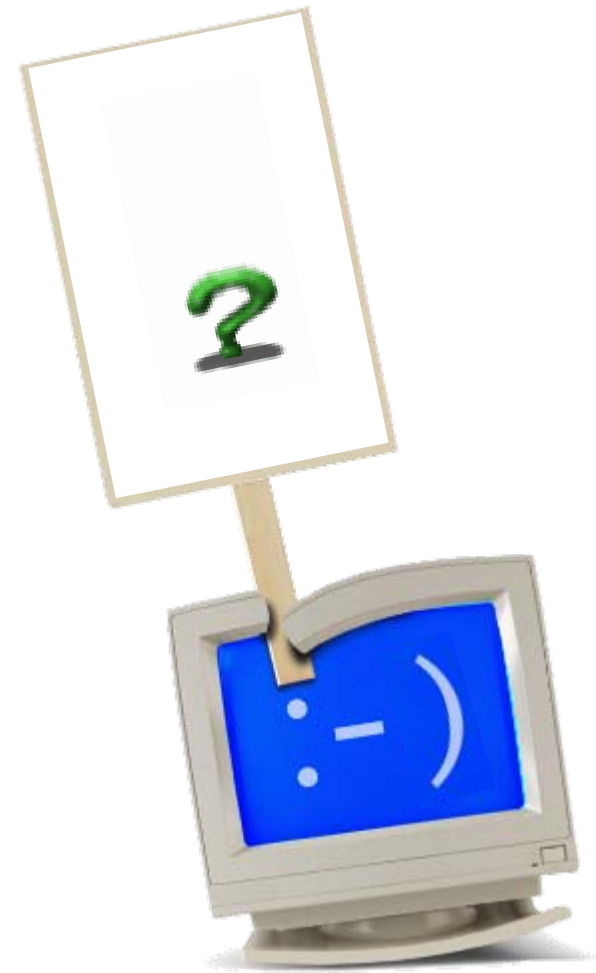


Summary

- De-perimeterization is being driven by long term dynamics ... it is here to stay
- Segmentation helps defend enterprise data through compartmentalization
- Security zoning takes this one step further providing segmentation together with Authentication, Authorization, Encryption, Access Control and Audit trails – In one centrally managed system

Apani

Questions?



For more
information see
us at Booth:
#2219

Data Center Security in a World Without Perimeters

- Date: 5/1/2006: Time: 11:15 AM
- Session Description: **Increased worker mobility and connectivity have generated enormous returns for companies but also equally enormous headaches for security professionals. The erosion of the traditional enterprise perimeter has made it necessary to devise new strategies to protect data and systems. Not surprisingly, these new strategies focus on the data center.**
- In this session we will examine the strategies and architectures for data center security in a world where the "perimeter" is melting away.
- **Session Format: 3 x 15 minute presentations with slides plus Q&A**