

# Panel: Enterprise Best Practices: Risk, Patch and Configuration Management

Configuration Management, Patch Management and Risk Assessment: Convergence Drivers

**Dennis Moreau, PhD**

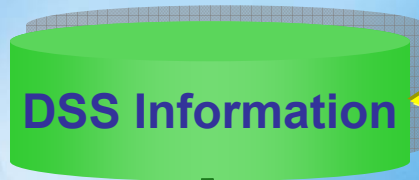
Chief Technology Officer

Configuresoft, Inc.



# Configuration doesn't happen in a vacuum.

Information that supports effective/efficient IT decisions?



## Tools:

Provisioning

Assessment

Chg. Mgmt  
Patch Mgmt

Provisioning  
Patching  
Chg. Mgmt

IT Audit

Provisioning

Assessment

Remediation  
Planning

Remediation/  
Mitigation

Verification

Deployment  
Templates

Assessment  
Checklist  
Controls

Actual  
Deployed  
Configuration

Needed  
Remediation  
Controls

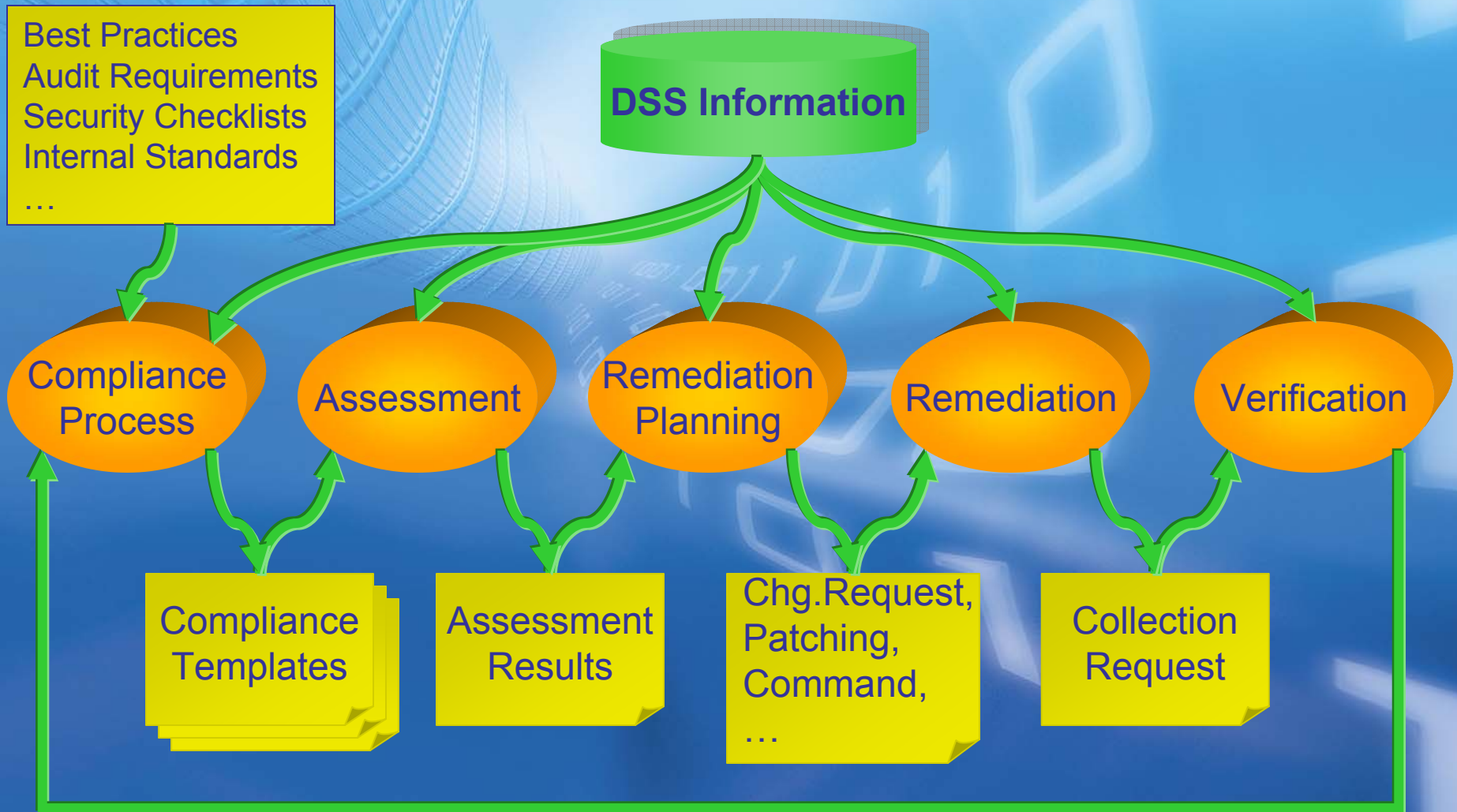
Audit  
Technical  
Controls

Continuous Monitoring



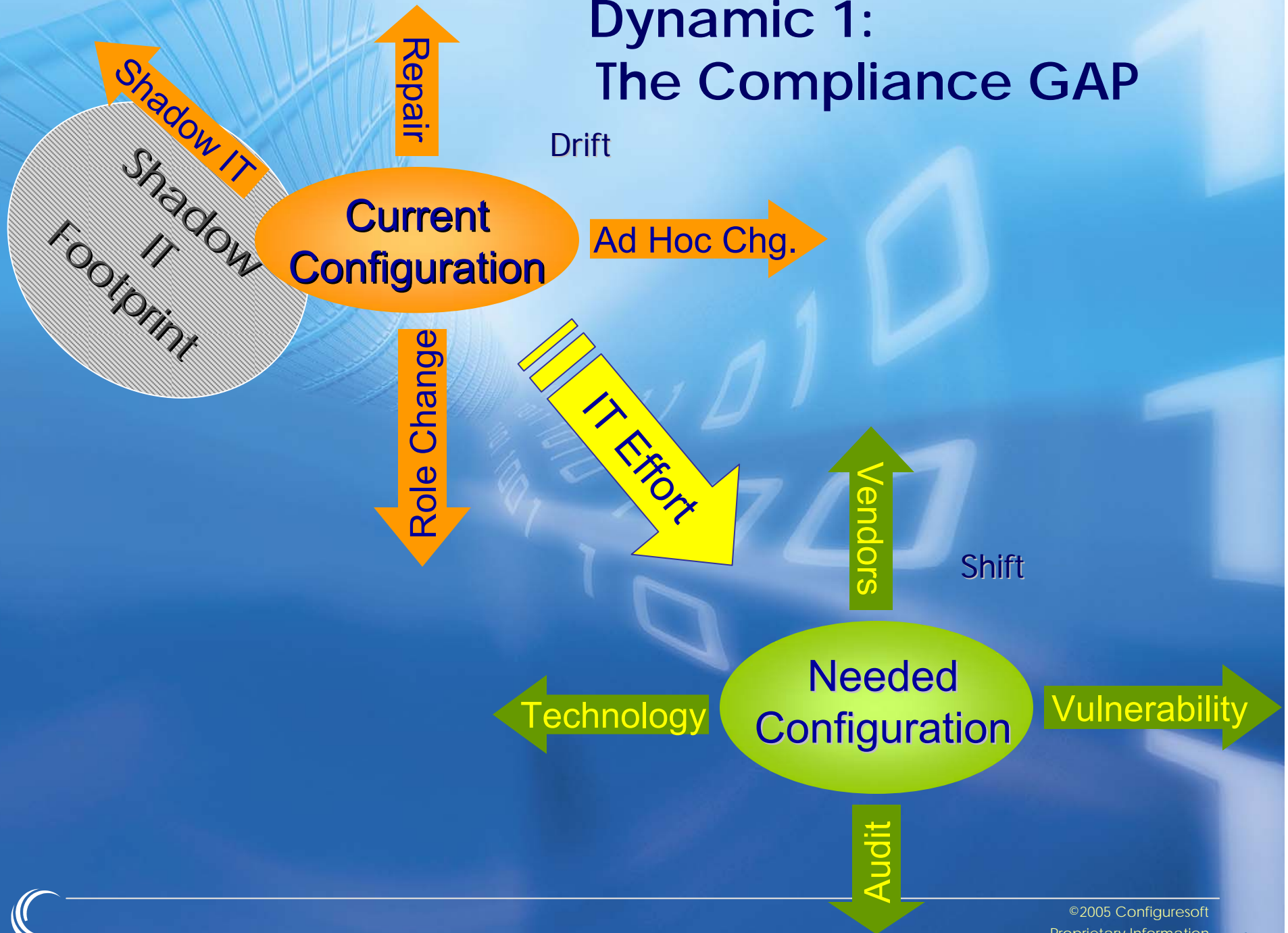
Think: Integration, Workflow, Leveraging, ... => Value

# Configuration Compliance: Process

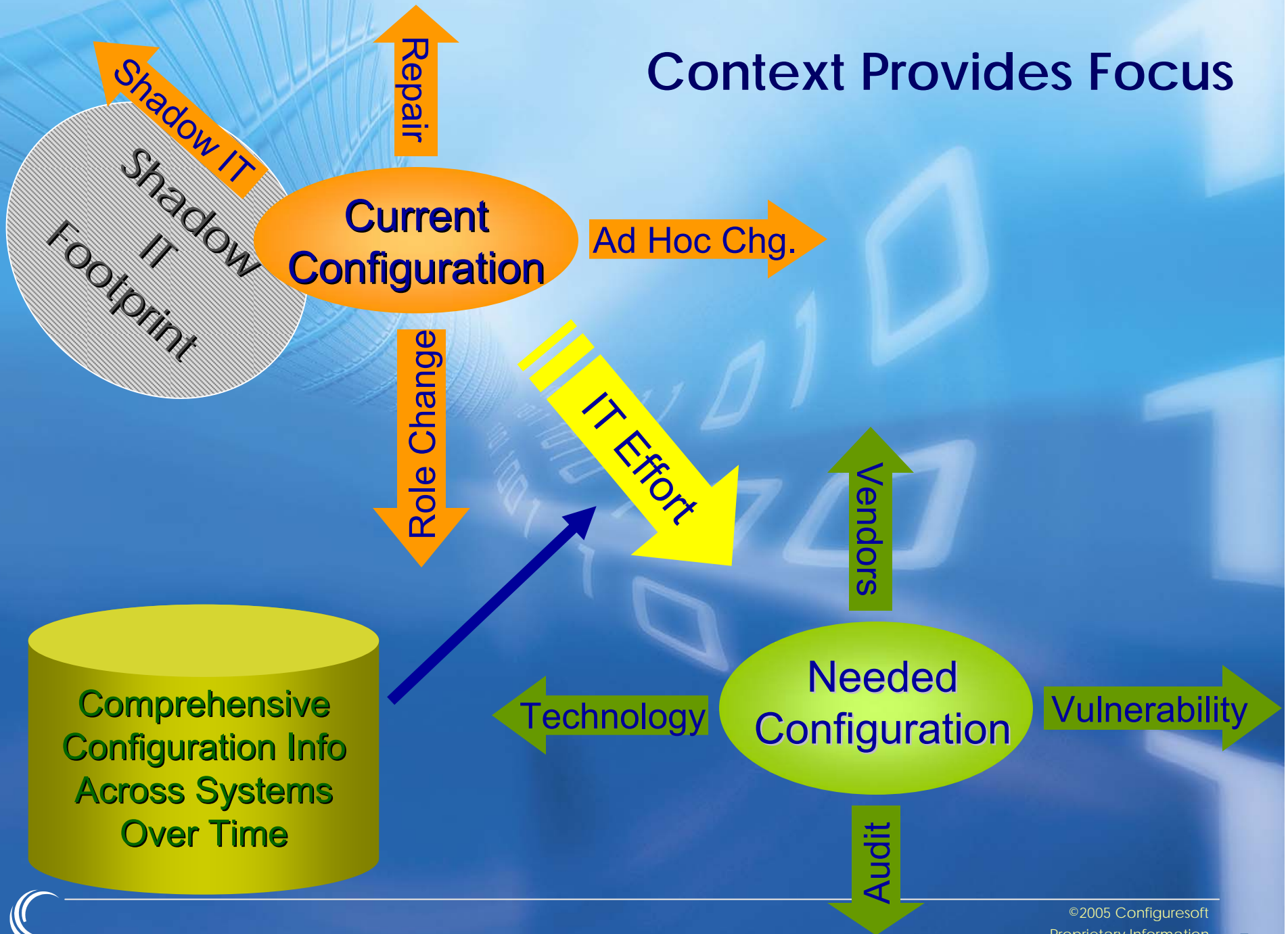


Continuous Monitoring

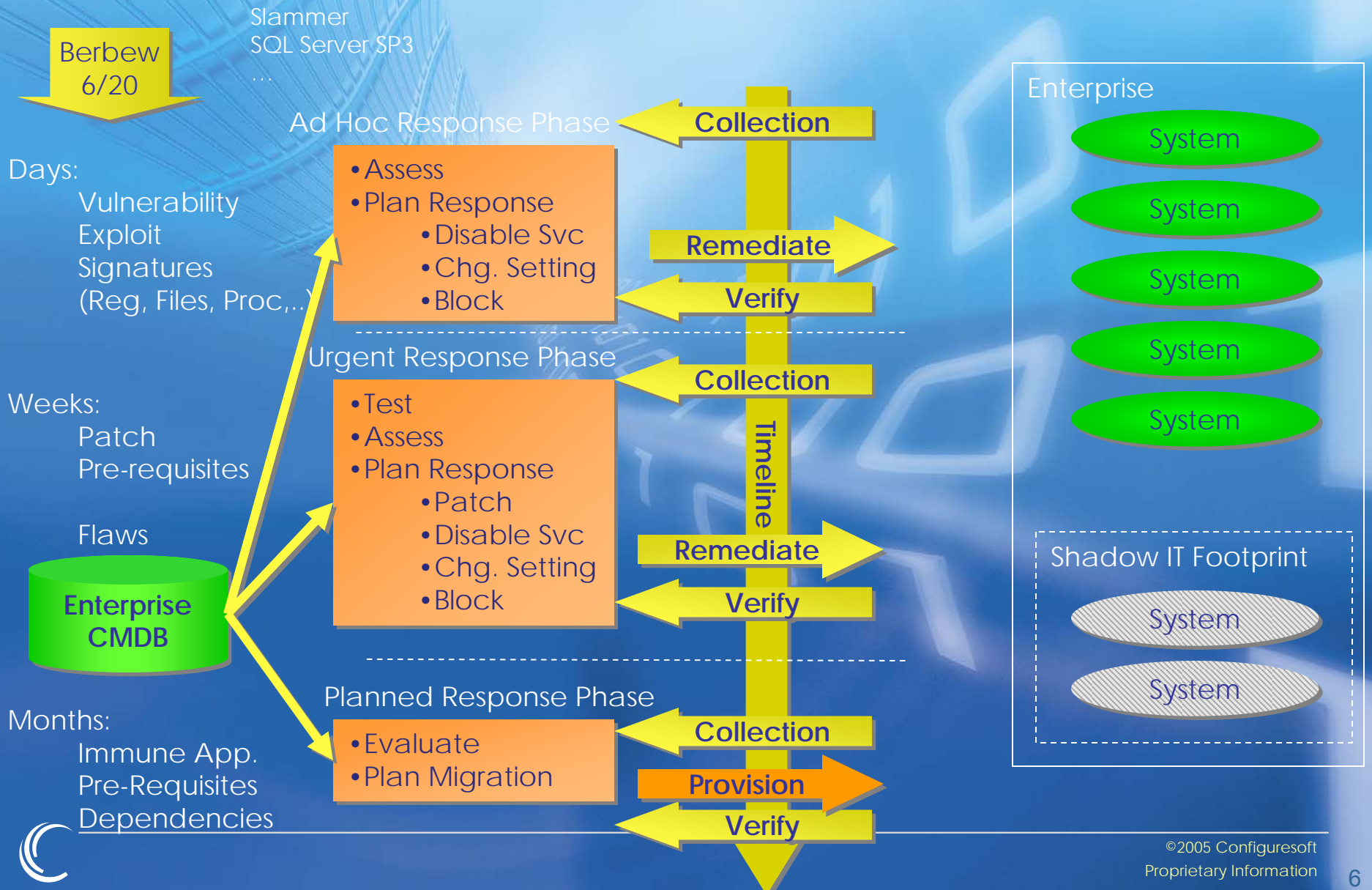
# Dynamic 1: The Compliance GAP



# Context Provides Focus

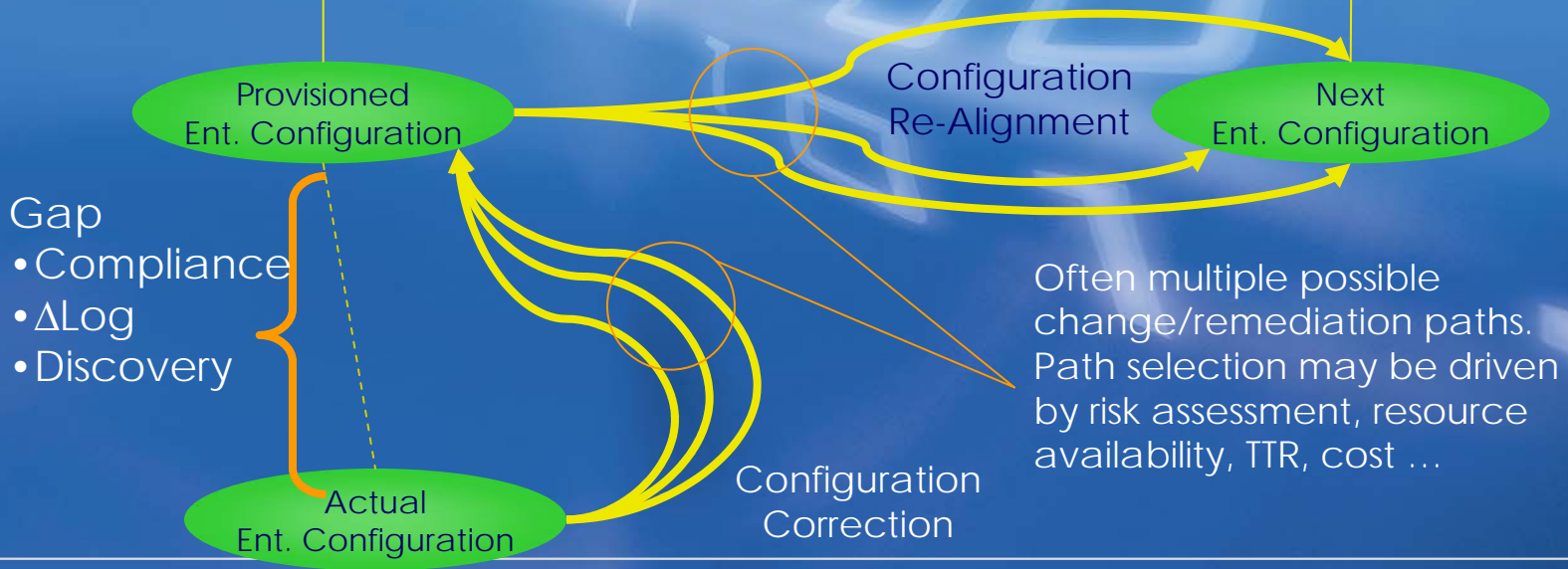


# Dynamic 2: Vulnerability Life Cycle

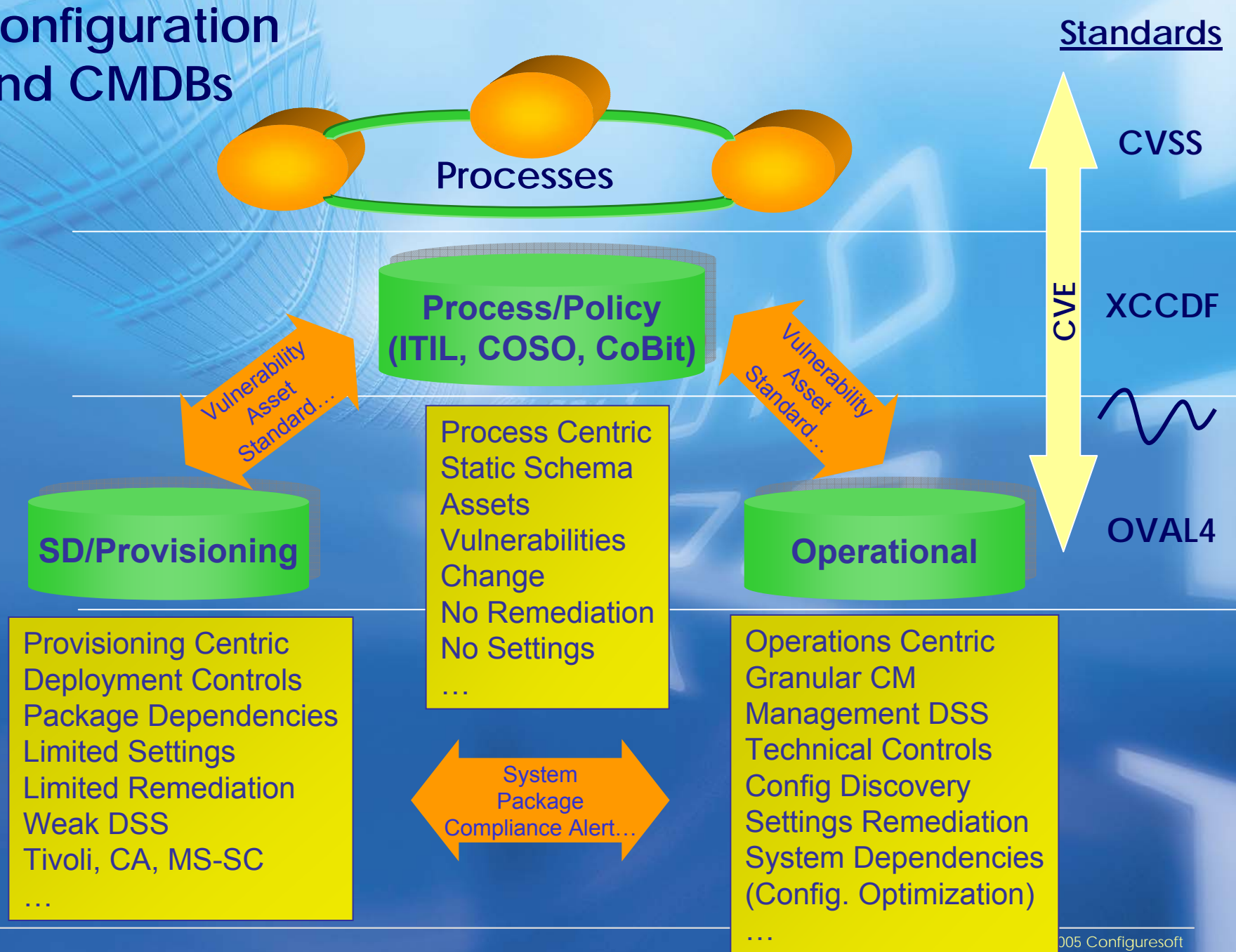


# Dynamic 3: Decision Intensive Response (automation challenged)

## Desired State Transition



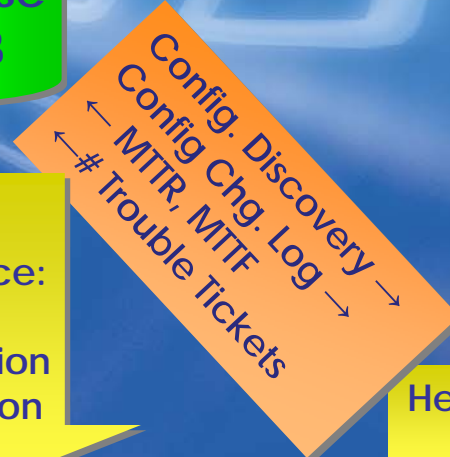
# Configuration and CMDBs



# Direction: Management Integration

Asset Management

Service Level Monitoring



Event Monitoring

Beyond  
Compliance:  
Configuration  
Optimization

Help Desk





Dennis R. Moreau  
Configuresoft, Inc.  
[dennis.moreau@configuresoft.com](mailto:dennis.moreau@configuresoft.com)

