

Expand Networks

Server less Office

About Expand

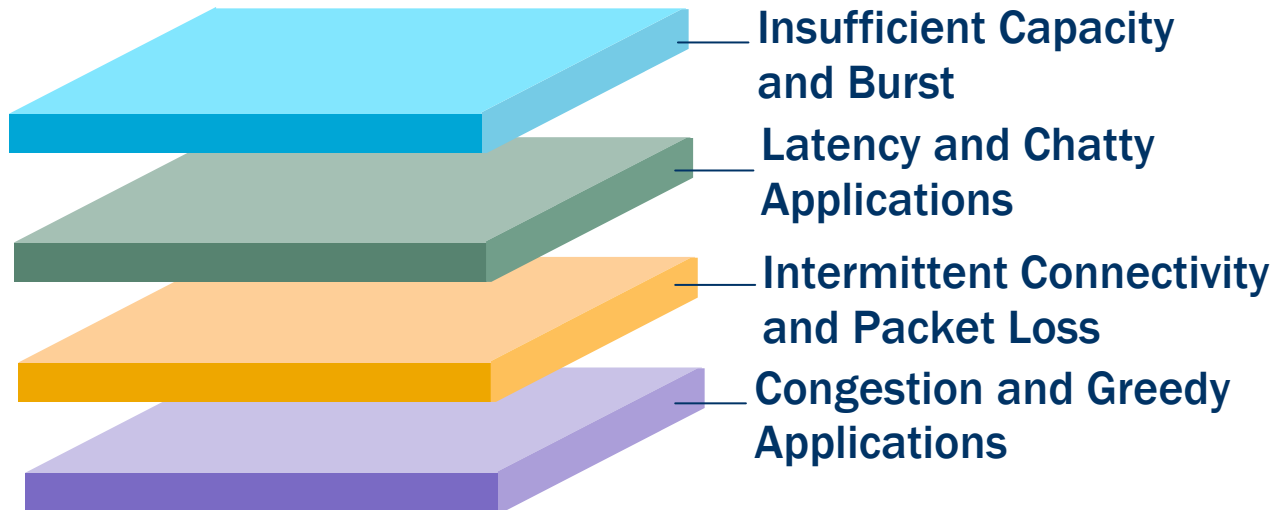
- **A leading provider of Application Traffic Management Systems**
 - 6 years operational history
 - 1,000 customers, 20,000 units
 - Largest enterprise deployments
- **Focus on improving branch office application delivery**
 - First-to-market
 - 8 patents since 1999
- **One of the fastest growing segments in networking**
- **Global sales and support**



Business drives for branch office solution

- **Branch office mandates simplicity – No local IT**
- **Consolidate of IT elements to headquarters**
 - Servers, Applications, Storage and Backup
- **More demanding applications at the branch**
 - Rich applications served from the data-center
- **Problem shifts from spread servers to WAN performance**

Application performance: Multi-layered Problem



Application Delivery Technologies

**Next-generation WAN
Compression**

**Application-Specific
Acceleration**

**End-to-end Monitoring
& Reporting**

**Layer 7 Quality of
Service**

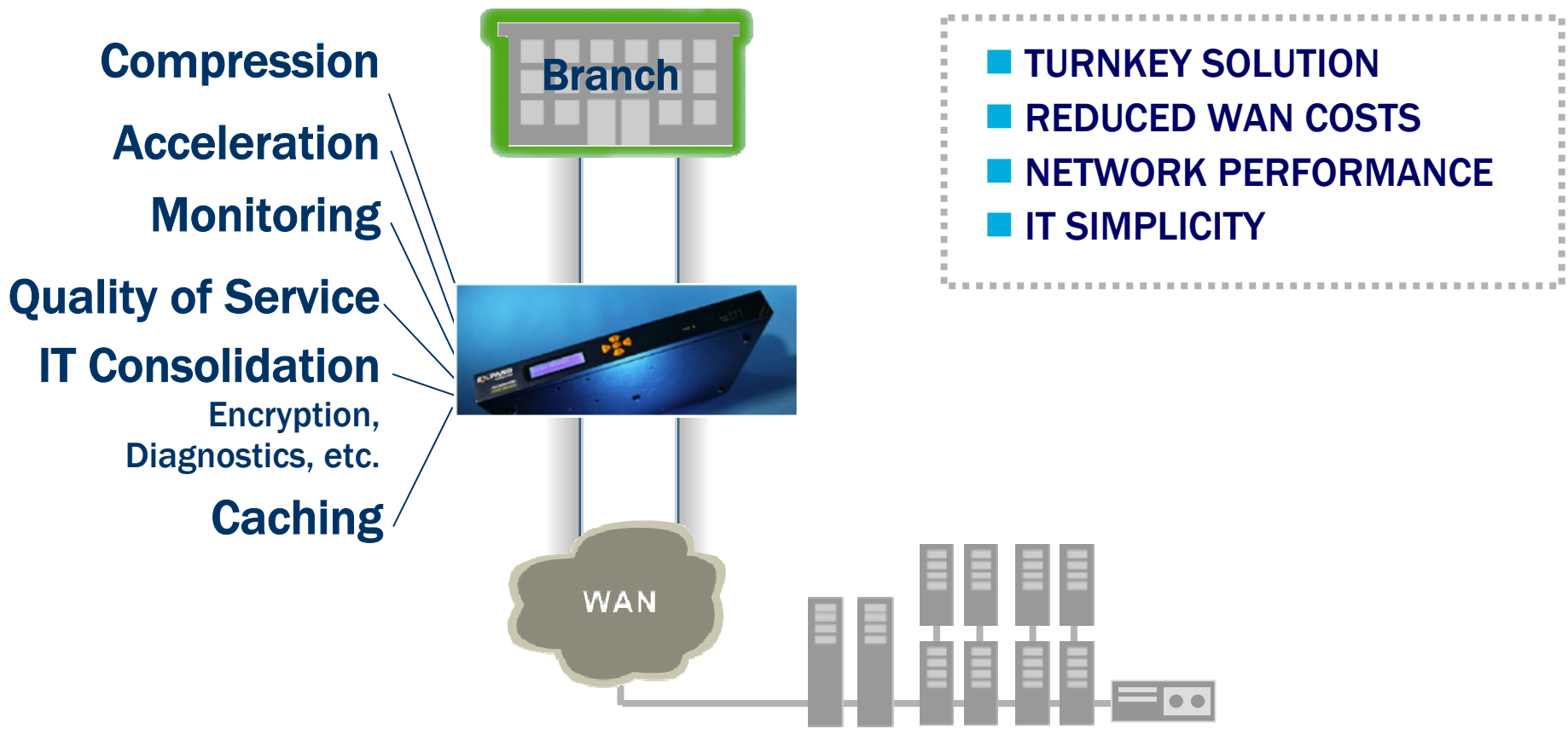


Application specific

- **TCP Protocol latency handling**
- **HTTP Caching for WEB based applications**
- **FTP Caching to reduce time of large file transfers**
- **DNS Caching handle complex WEB pages multi-objects slowness**
- **File Services (CIFS and NFS) store cached files on disk**

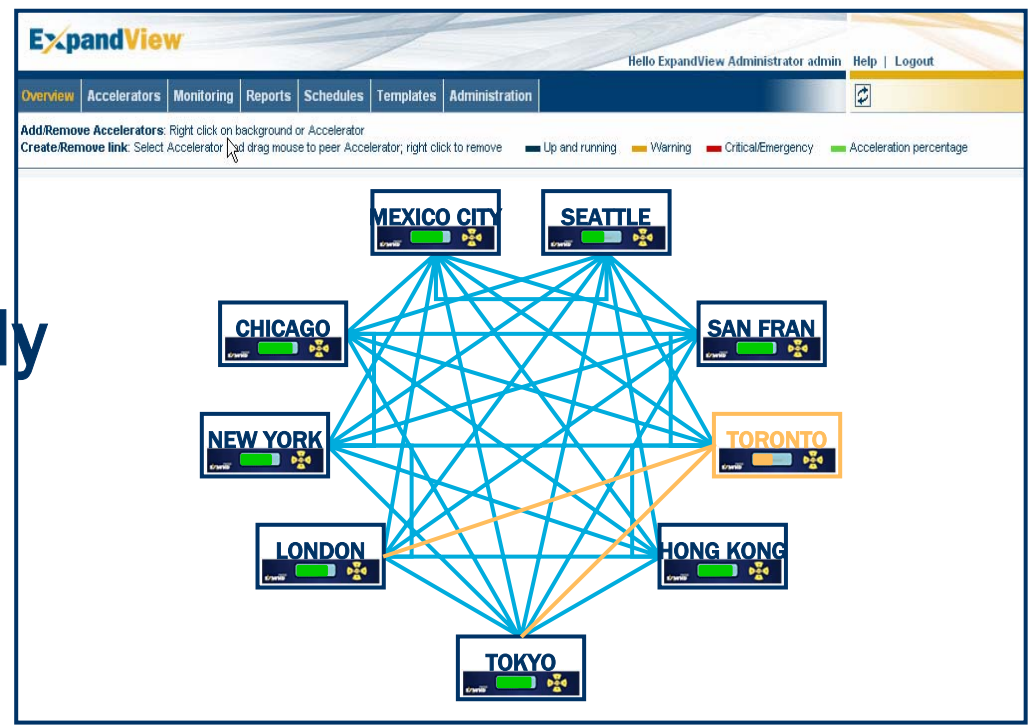
Expand's Application Gateway

Eliminates complex infrastructure in branch office



Managing the solution

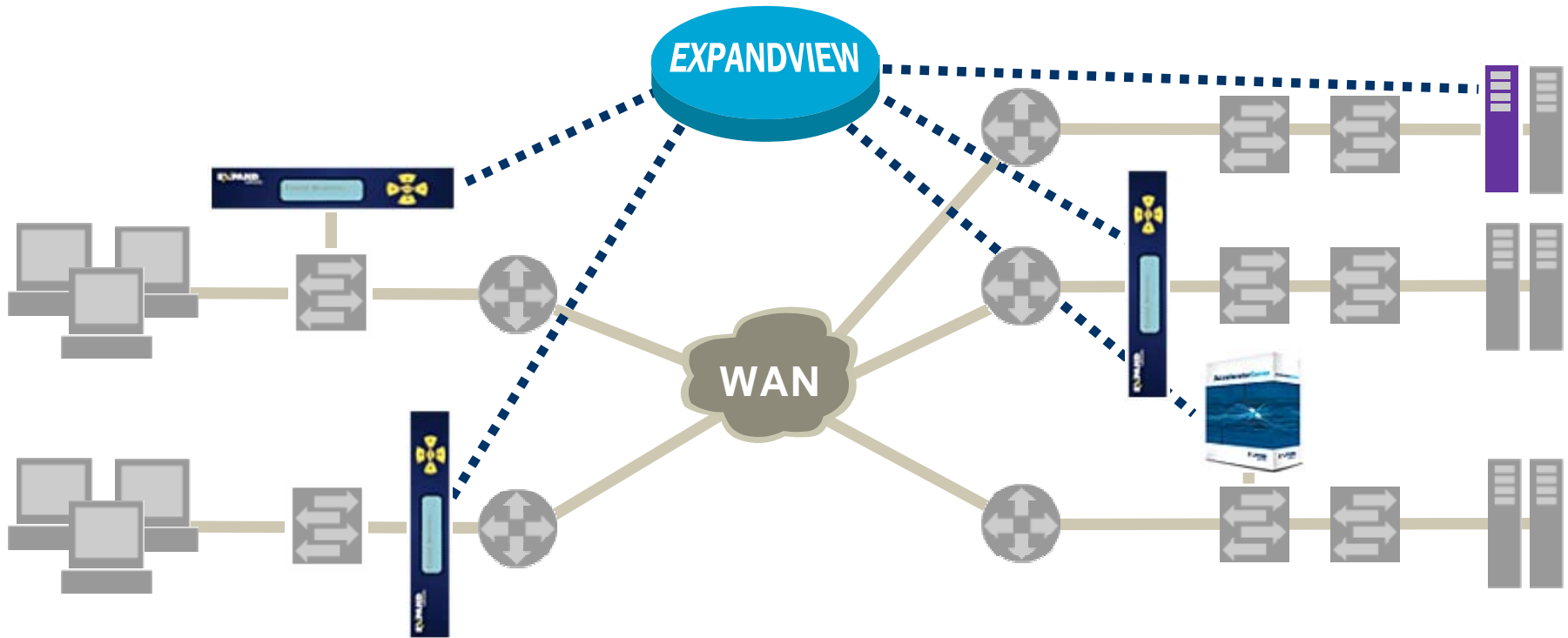
- Centrally manage all
- Address roll-out options, with zero configuration
- Branch office friendly appliance



What to ask about a solution

- Scalability is key for branch office
- Server replacement requires a flexible platform
- Performance and optimization figures
- Branch office simplicity and friendliness
- How transparent is the solution?
- Security implications of the solution

A Complete Framework



- ▶ Grow as needed
- ▶ Network transparent, standards based

- ▶ Options to maximize network fix

And why are customers buying?

■ Applications response time is slow

- WEB Applications, FTP, Citrix, SAP

■ Rollout of new applications and usage

- Any new application as well as VoIP to the branch

■ Consolidation of infrastructure

- More applications served from data-center
- Storage served from data-center

■ Avoid links upgrade, monitor usage

■ High latency links leave BW unused

- Long and fat pipes reveal TCP protocol inefficiency

Thank you