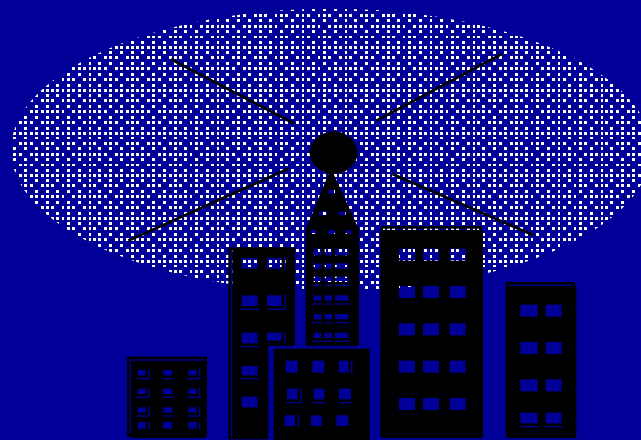


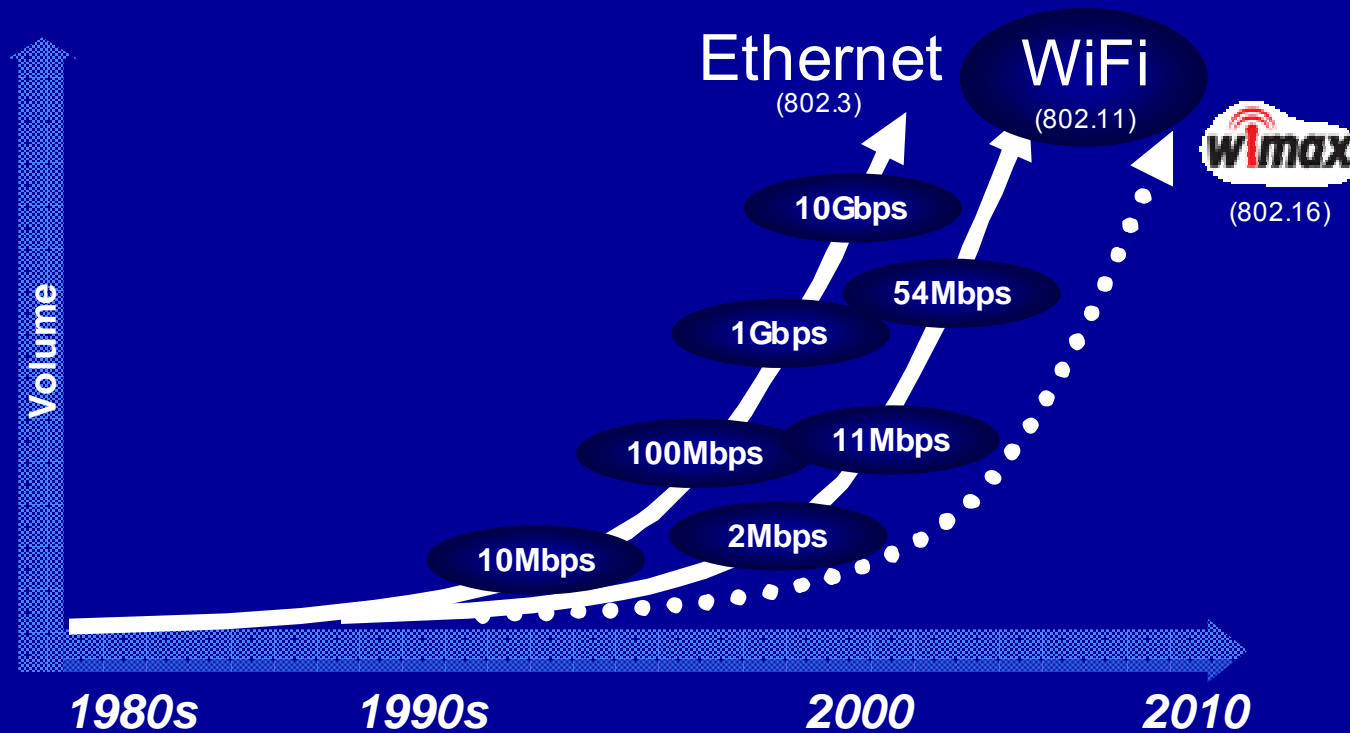
Intel's 802.16 Broadband Wireless Plans

**Dan Sweeney, Director of Marketing
Broadband Wireless Division
Intel Corporation**



Standards and Interoperability

IEEE: Proven path to innovation and low cost communications



IEEE Model

Proprietary Model

| | | |
|-----------------------------------|--|---|
| Investments in Innovations | 100's of companies 1000's of engineers | Single company limits the pace of innovation |
| Cost/Price Dynamics | Volume, innovations & competition drives cost/pricing down | Ability & motivation for lower cost/pricing lacking |

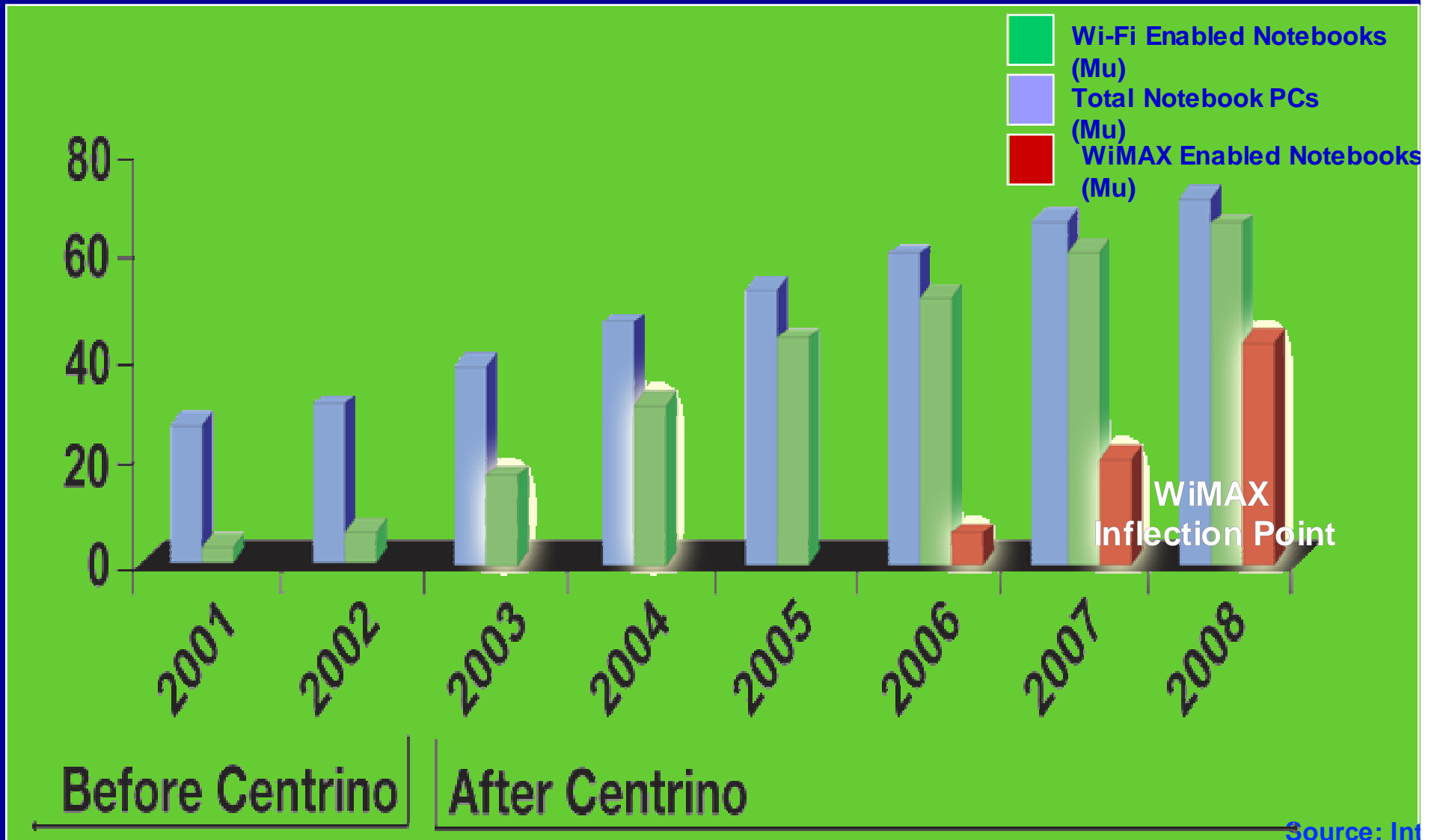
What is the WiMAX Forum*?

Similar to WiFi Alliance for 802.11

- **Non-profit organization comprised of over 120 companies**
 - Equipment manufacturers
 - Component manufacturers (silicon, RF, antenna)
 - Carriers
 - Software developers
- **WiMAX forum charter:**
 - Based upon market requirements, reduce the breadth of the IEEE 802.16 standard so that interoperability can be achieved
 - Develop certification test suites & qualified test labs
 - Host interoperability events (“plug fests”)
 - Provide WiMAX-Certified* stamp of approval for compliant equipment
- More info at: www.wimaxforum.org

Integration Will Drive Adoption

Requires Low Cost & Worldwide SKU



Source: Intel

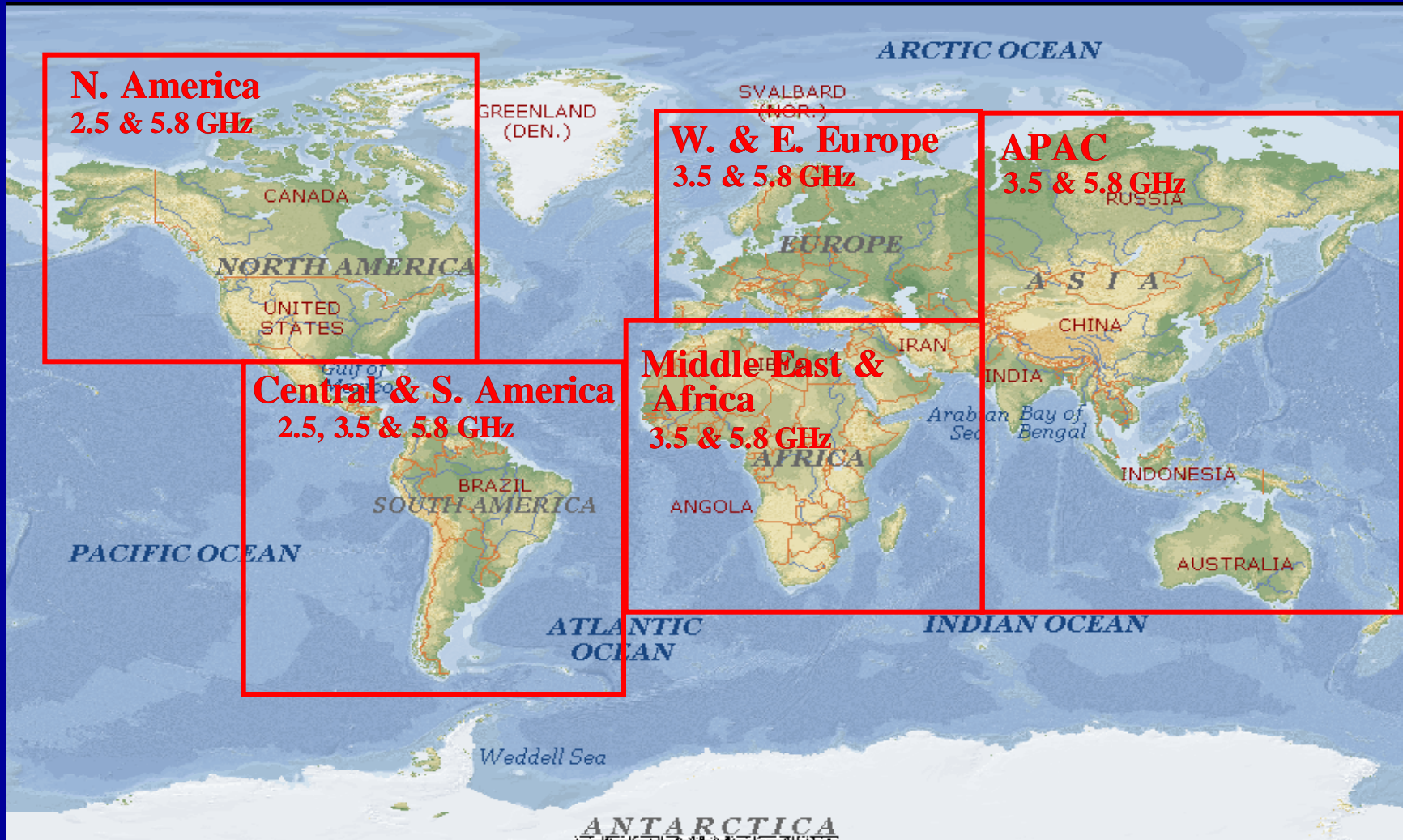
Targeting Three Bands for World-Wide Client

Licensed Bands

- 2.5GHz (2.3-2.4; 2.5-2.7)
- 3.5GHz (3.3-3.7)

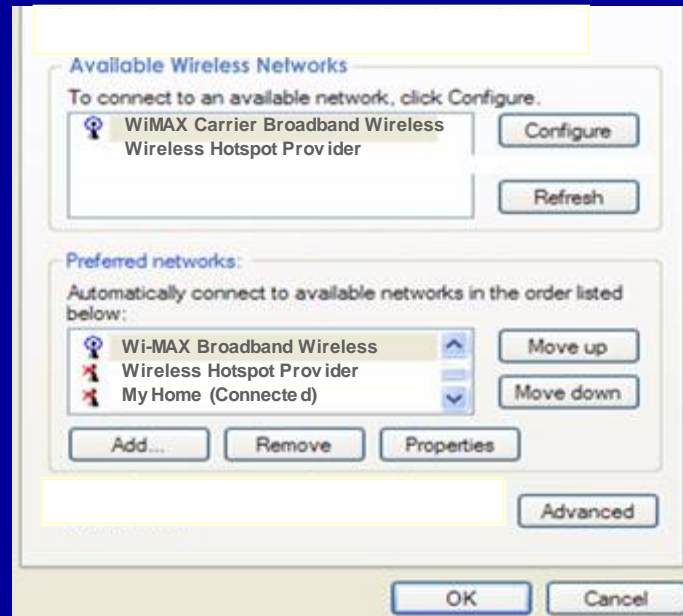
Unlicensed Band

- 5.8GHz (5.25-5.85)

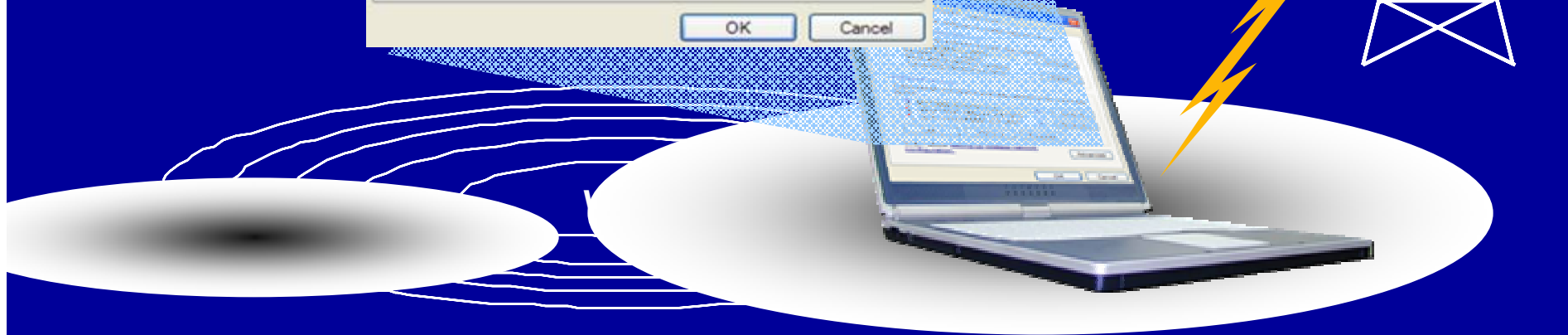


WiFi and MiMAX Synergistic and Will Coexist

“Always Best Connected”



802.16e



WiMAX Network Evolution

| Network Type | Description | Network Clients | Services |
|-------------------------|--|---|---|
| Fixed | Traditional BWA network providing fixed broadband data and voice services to SMB and consumers | <ul style="list-style-type: none"> • Outdoor CPE • Indoor CPE | <ul style="list-style-type: none"> • QOS data service (SMB) • Best efforts data services (consumers) • Fixed voice services |
| Fixed + Portable | Next generation wireless broadband enabling battery powered clients and improved indoor performance - break-before-make cell handoff | <ul style="list-style-type: none"> • Outdoor CPE • Indoor CPE • Residential Gateways • Notebook computers • Handhelds (data) | <ul style="list-style-type: none"> • QOS data service (SMB) • Best efforts data services (consumers) • Fixed voice services • Portable data services |
| Fixed + Mobile | Backend infrastructure enables mobile voice services with make-before-break cell handoff | <ul style="list-style-type: none"> • Outdoor CPE • Indoor CPE • Residential Gateways • Notebook computers • Handhelds (data + voice) | <ul style="list-style-type: none"> • QOS data service (SMB) • Best efforts data services (consumers) • Fixed voice services • Portable data services • Real time services (ie: mobile voice) |

Broadband Wireless Time has Come

- **802.16 standardization and WiMAX Forum will deliver interoperability, volume, low cost and continuing innovation**
- **Need for broadband connectivity to homes and businesses grows daily**
- **Intel committed to developing the 802.16 market segment**
 - **Increases the value of mobile computing with ‘always on broadband pipe’**
 - **Attractive market segment for innovation and growth**
 - **Aligns with wireless core competencies**